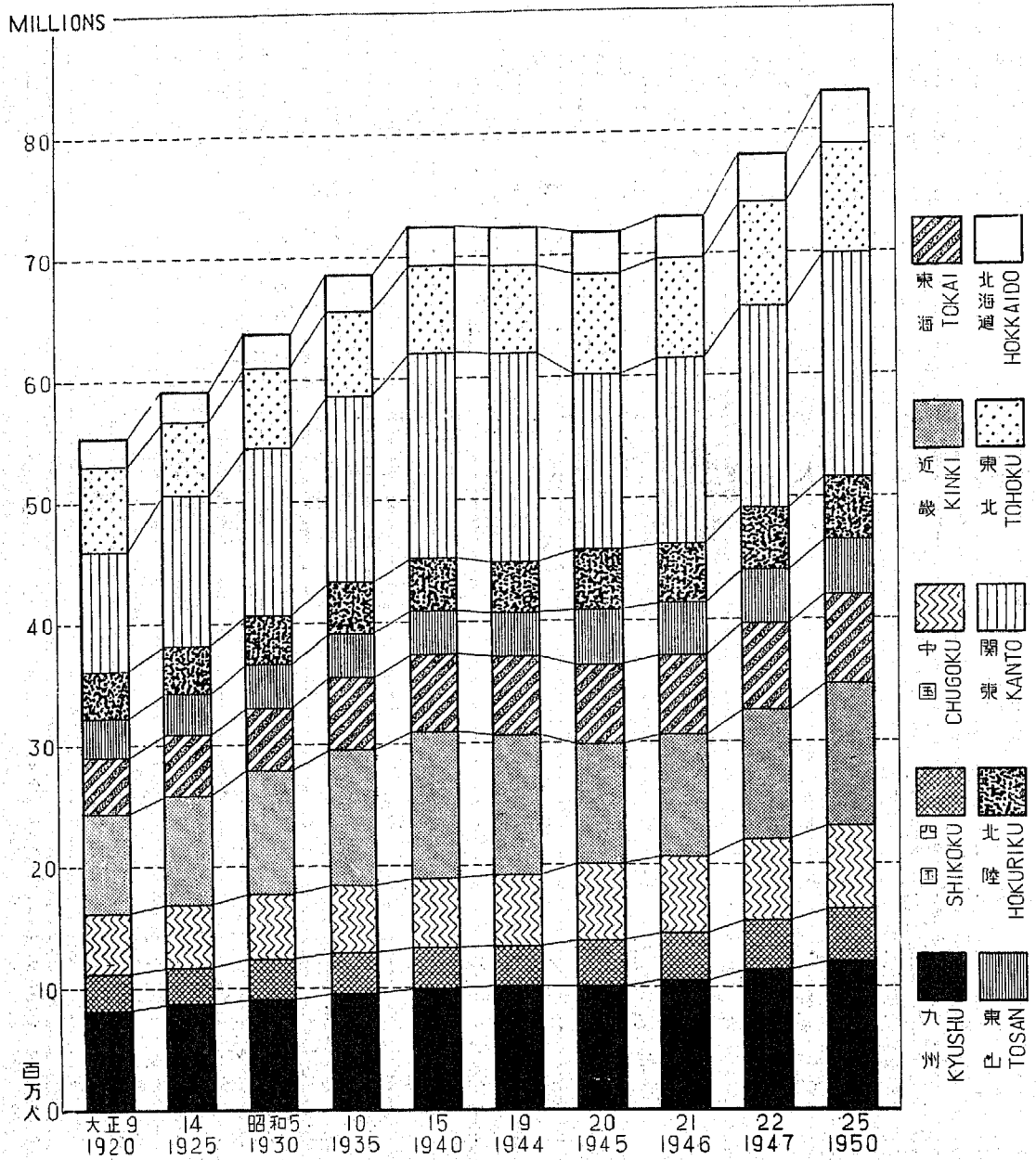


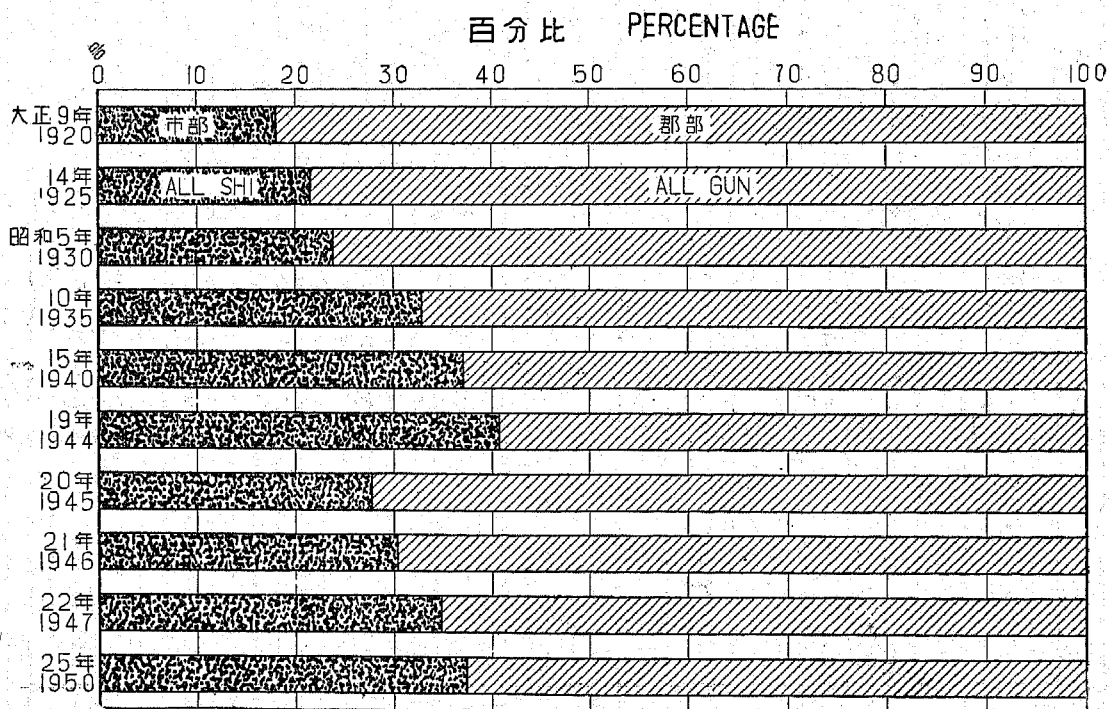
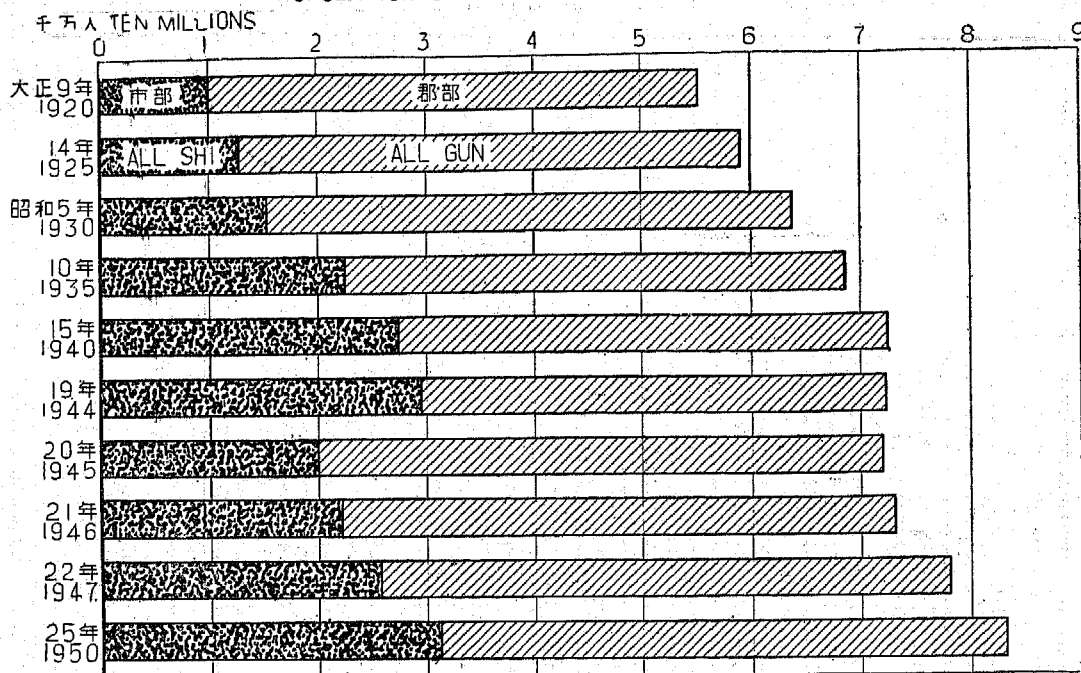
統計圖表

Maps and diagrams

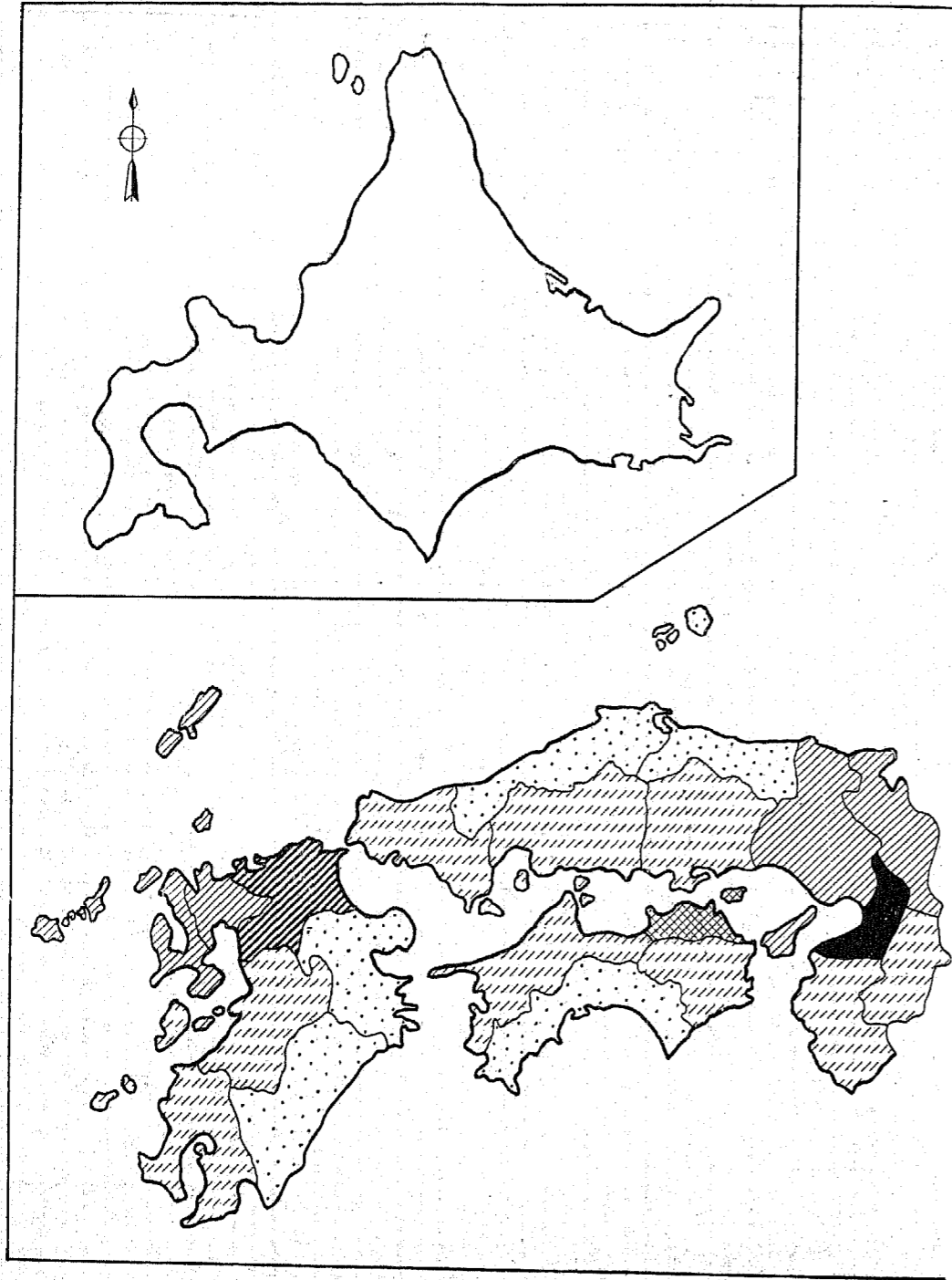
地方别人口の年次推移 大正9年～昭和25年
 POPULATION OF REGIONS: 1920 TO 1950



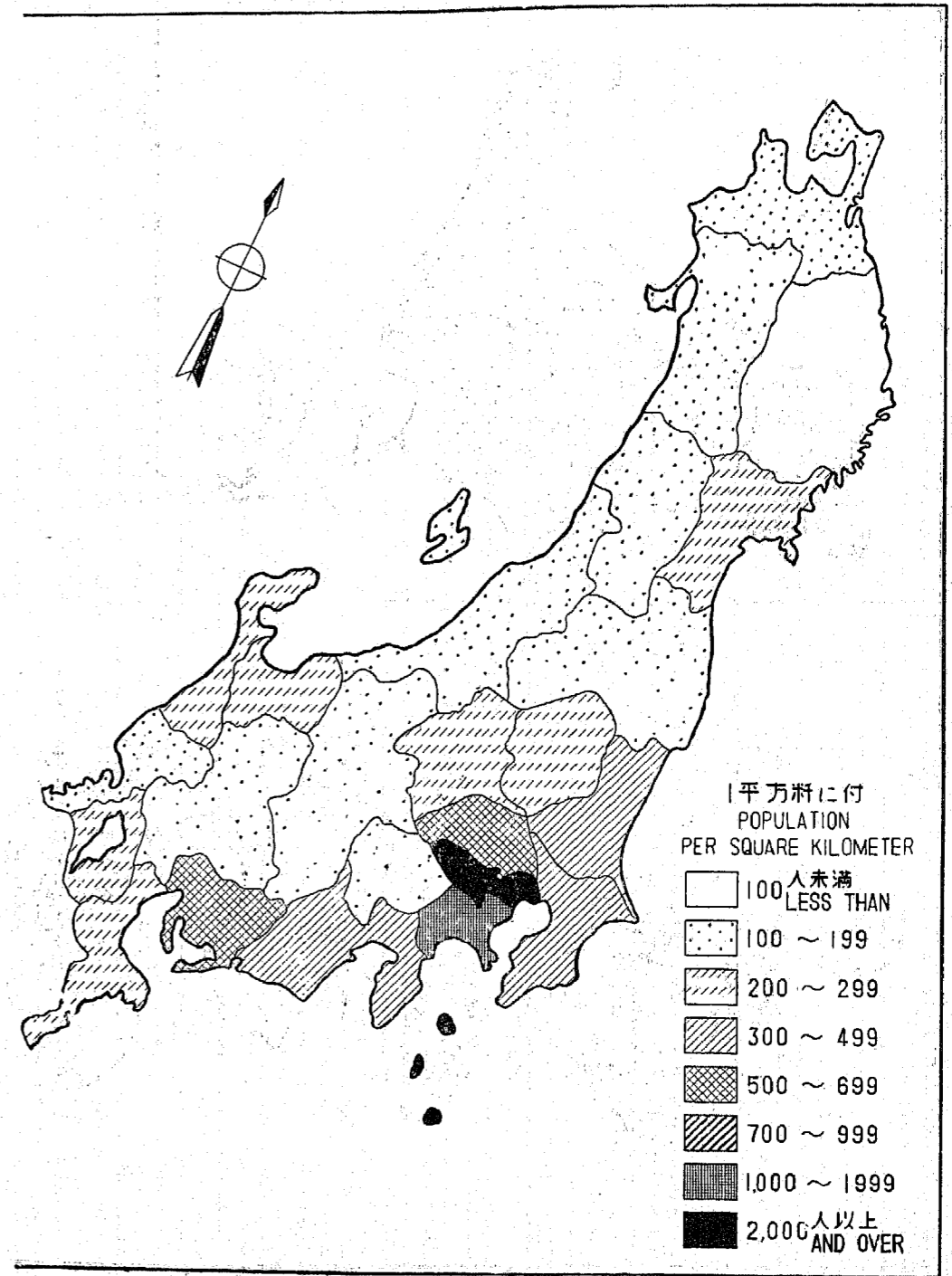
市部郡部別人口の年次推移 大正9年～昭和25年
 POPULATION OF ALL SHI AND ALL GUN : 1920 TO 1950



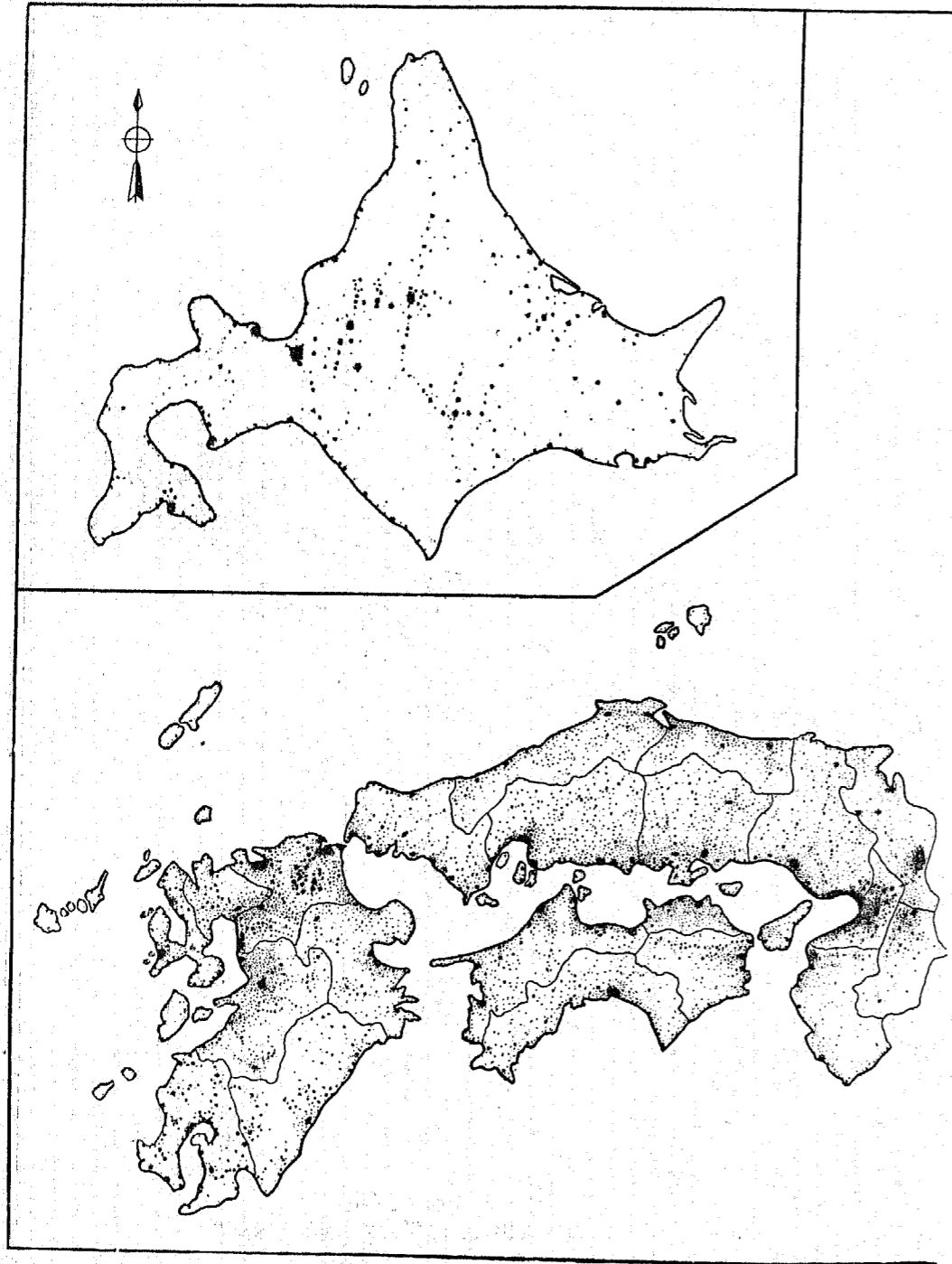
都道府県別
MAP OF JAPAN SHOWING POPULATION



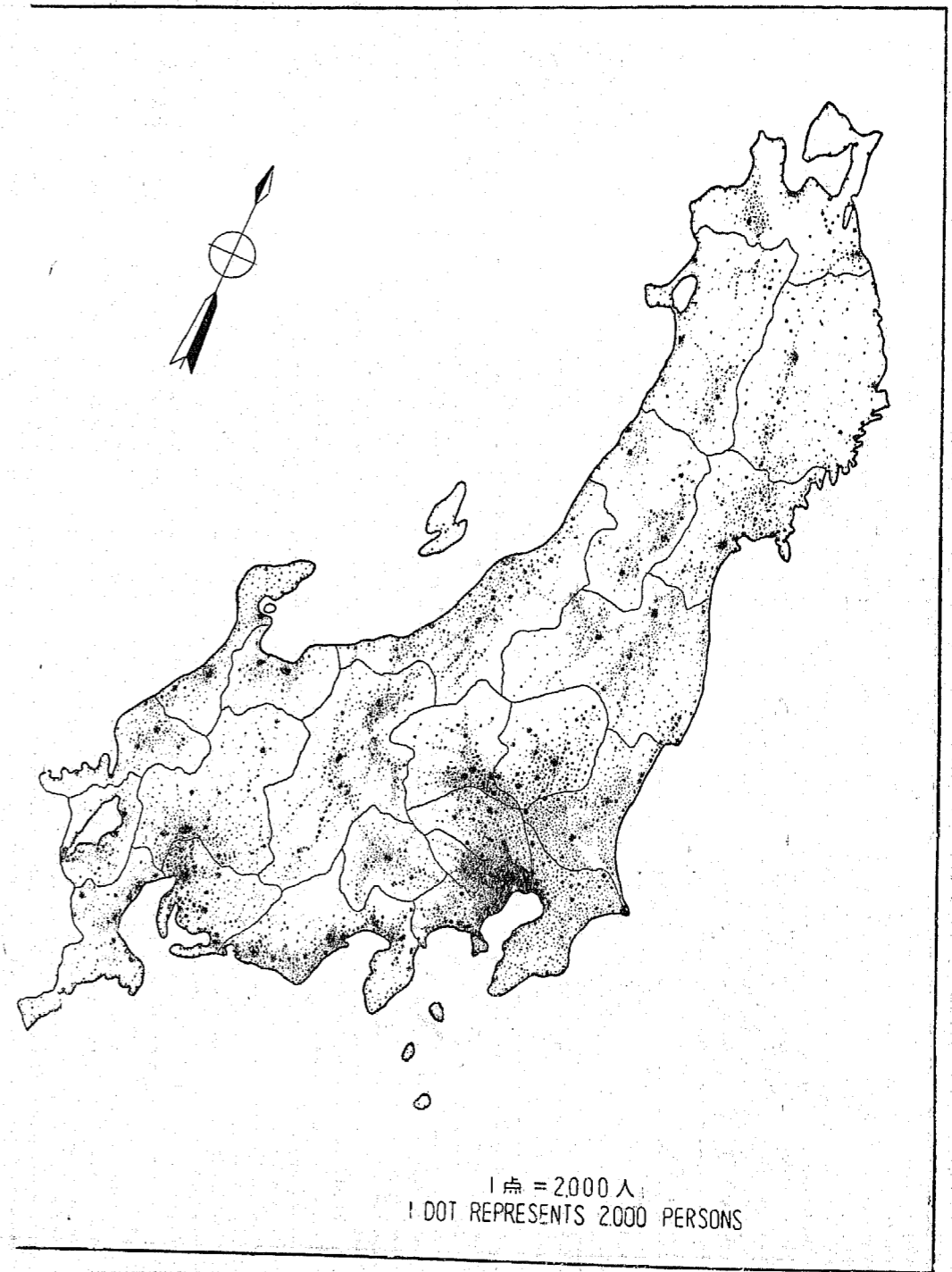
人口密度図 昭和25年
DENSITY BY PREFECTURE: 1950



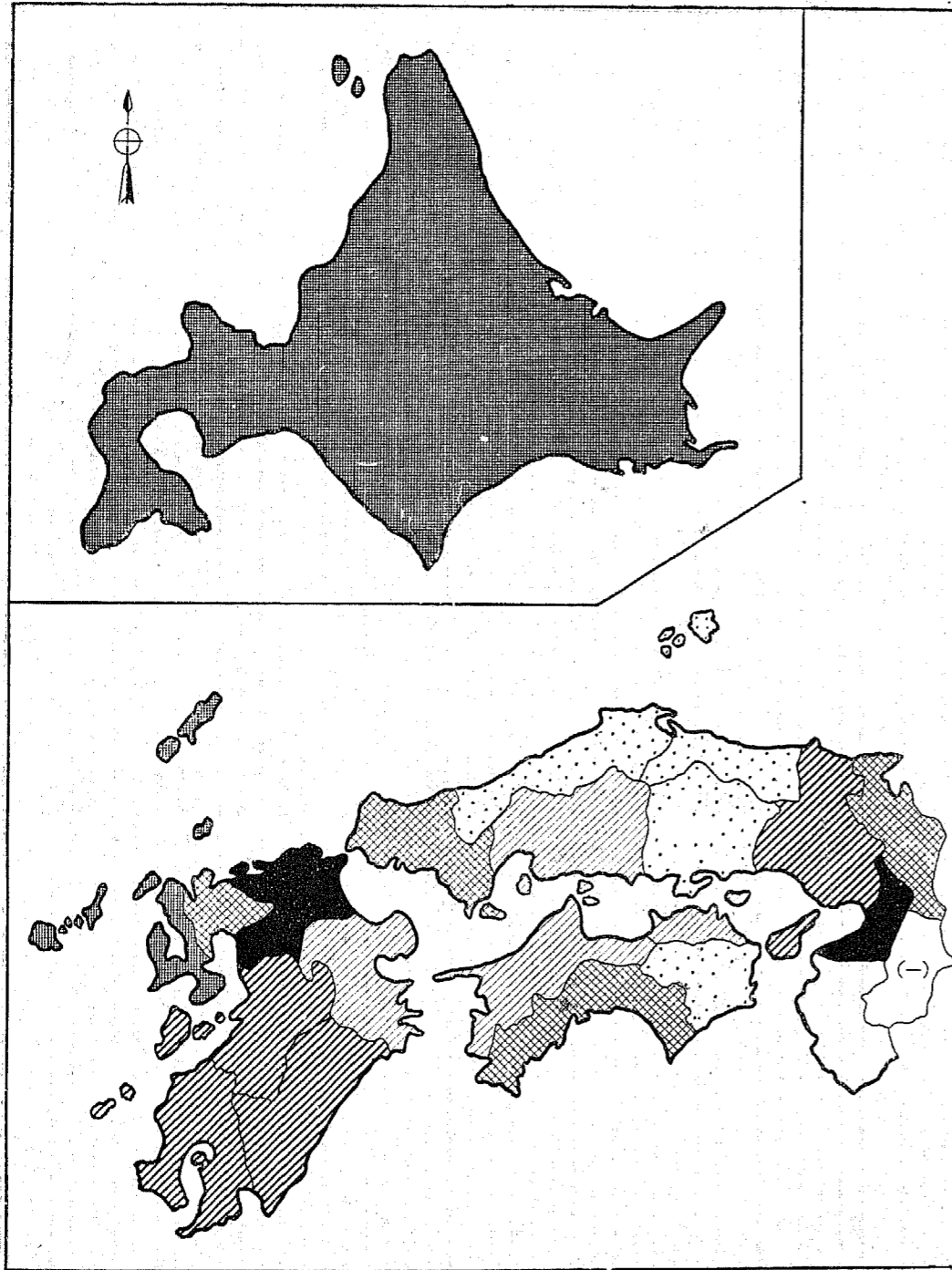
人口
MAP OF JAPAN SHOWING



分布図 昭和25年
POPULATION DISTRIBUTION: 1950



都道府県別
MAP OF JAPAN SHOWING POPULATION



人口増加図 昭和20年対同25年
CHANGE (INCREASE) BY PERFECTURE 1945 TO 1950

