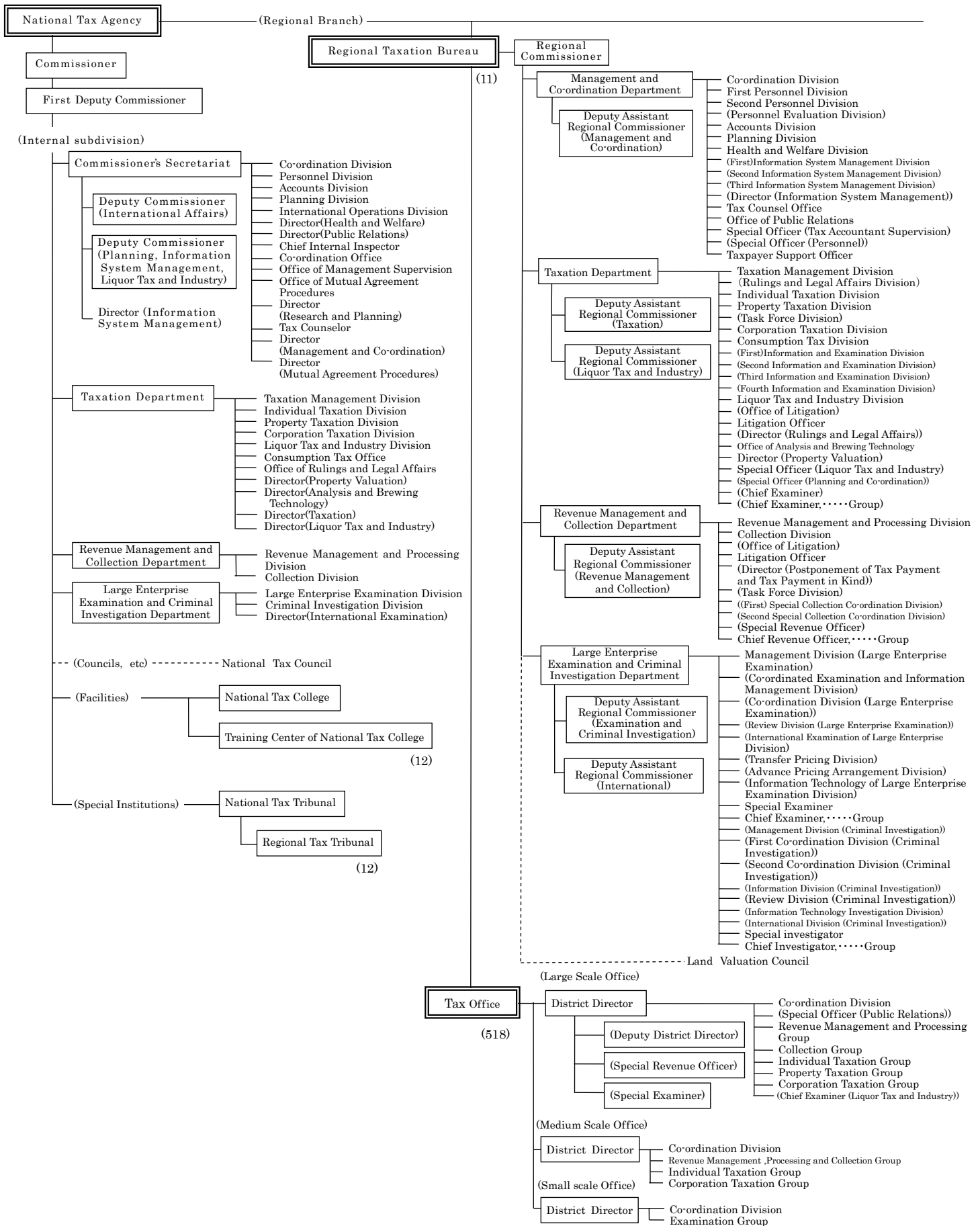


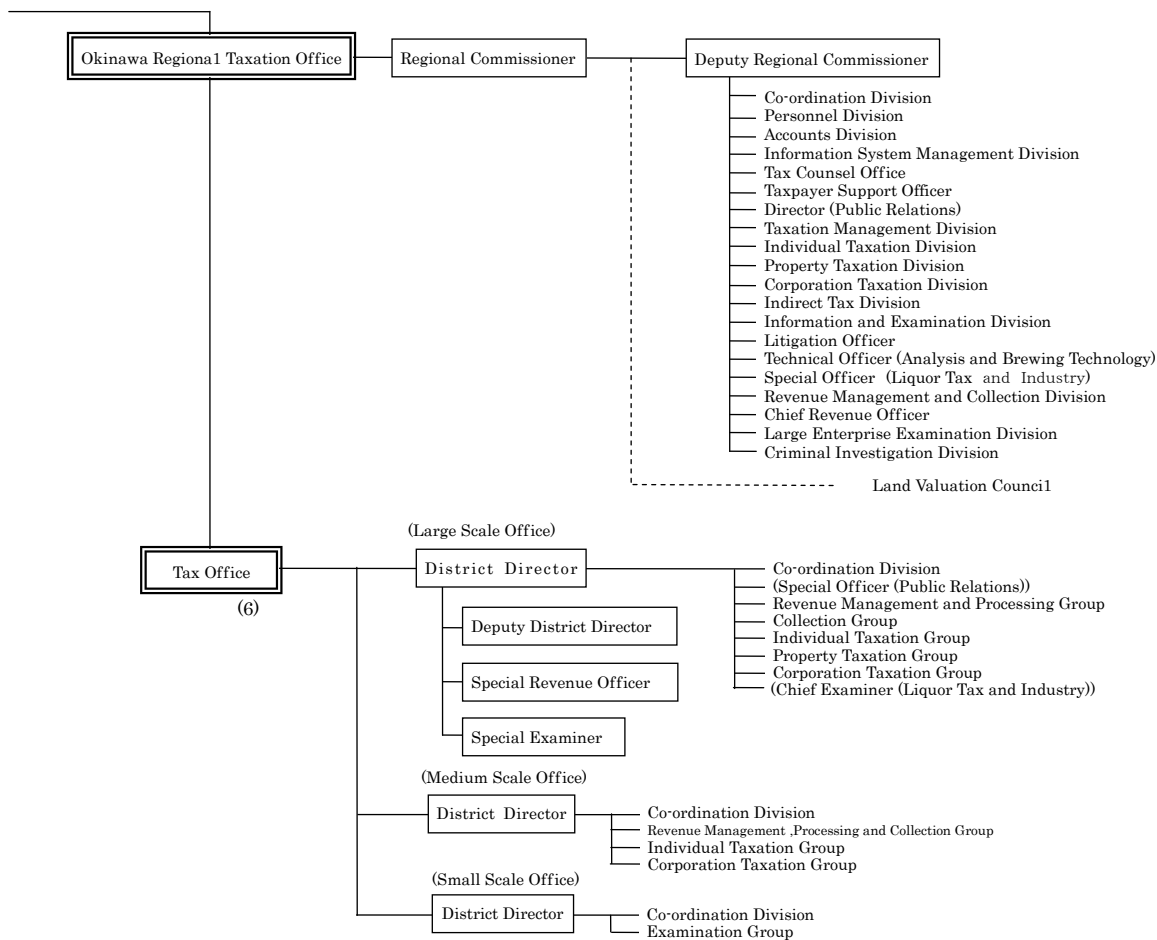
平成21年度 定員：56,240人



1 - 3 Organization Chart of National Tax Agency

(FY2009)(Number of persons: 56,240)





Note:

- 1 The Taxation Departments of Regional Taxation Bureaus other than Kanazawa, Takamatsu, and Kumamoto are composed as follows:
First Taxation Department, and Second Taxation Department
- 2 The Examination and Criminal Investigation Departments of Tokyo, Nagoya and Osaka Regional Taxation Bureaus are composed as follows:
Tokyo : First Examination Department, Second Examination Department Third Examination Department, Fourth Examination Department, and Criminal Investigation Department
Nagoya : Examination Department and Criminal Investigation Department
Osaka : First Examination Department, Second Examination Department, and Criminal Investigation Department
- 3 Organization of Regional Taxation Bureau and Taxation Office written in brackets are those which are not located in every Bureau/Office.